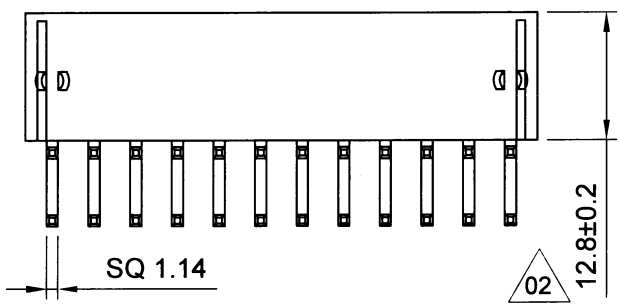
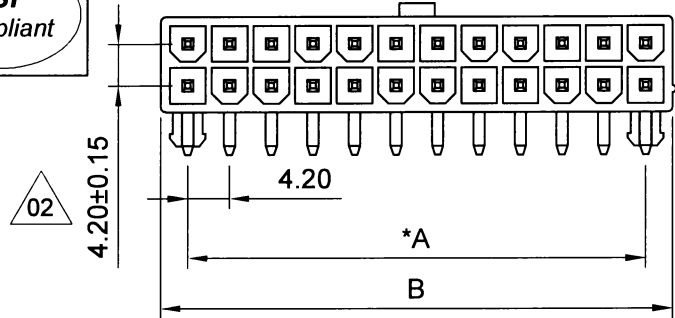
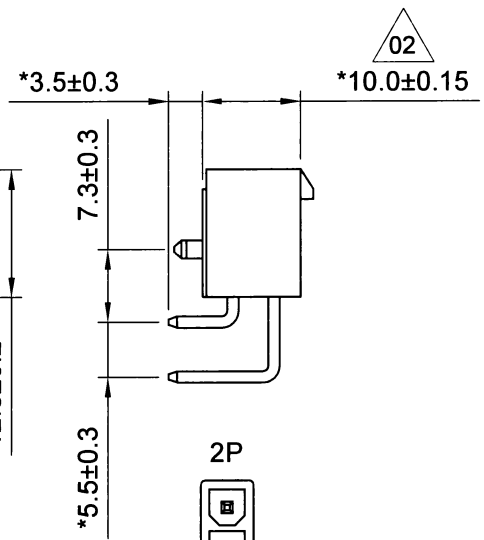


HSF
Compliant

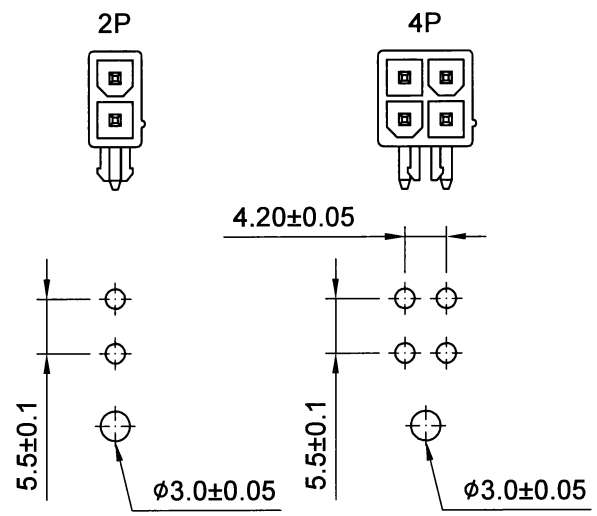
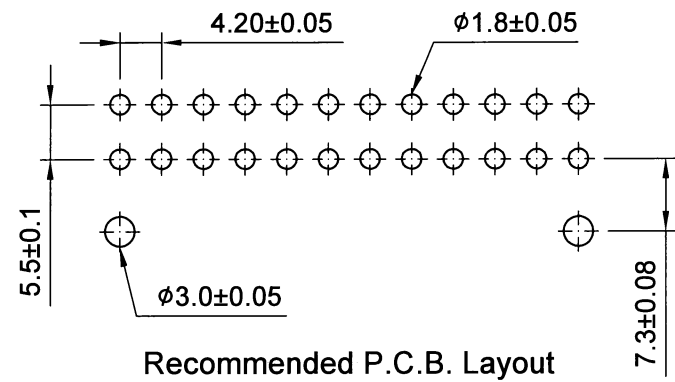
REV.	DESCRIPTION	DATE	APPR.
02	修改公差	2012/10/11	羅文含



4420A-WR-xxT-B
No. of contacts



Specifications
 Poles : 2 ~ 24
 Current & Voltage Rating : 7A & 250V AC, DC
 Insulation Resistance : 1000 MΩ min.
 Contact Resistance : 20 mΩ max.
 Dielectric Withstanding : AC 1500V / minute
 Operating Temperature : -25°C ~ +85°C
 Contact Material : Brass
 Insulator Material : Nylon-66, UL 94V-2 (White)
 Finish : Tin plated
 Applicable PC Board Thickness : 1.6mm
 Packing : Bag



No. of contacts	Dimension	
	A	B
02	5.4	5.4
04	4.20	9.6
06	8.40	13.8
08	12.60	18.0
10	16.80	22.2
12	21.00	26.4
14	25.20	30.6
16	29.40	34.8
18	33.60	39.0
20	37.80	43.2
22	42.00	47.4
24	46.20	51.6

JAWS 兆旭股份有限公司
 JAWS CO., LTD.
 7F., No.31, Ln. 169, Kangning St., Xizhi Dist.,
 New Taipei City 221, Taiwan (R.O.C.)
 TEL:886-2-2692-2898
 FAX:886-2-2692-2618
 Http://www.jaws.com.tw

THIRD ANGLE PROJECTION		DESIGN UNITS mm INCH
SIZE: A4	SCALE: FREE	SHEET: 1/1
CPN:		DWG NO.: JAWS-SOP-4420A010
DAN NO.: S10110-041		REV.: 02

TITLE: 4.2mm Wafer Dual Rows
 with Locating Pegs Right Angle Type
 PARTS NO.: 4420A-WR-xxT-B

GENERAL TOLERANCES:
 ±0.30

DRAWN	林峻吉	DATE	2012/10/11
CHECKED	<i>Wang</i>	DATE	2012/10/11
APPROVED	<i>Wen</i>	DATE	2012/10/11